



Reddal Hill Primary School

GLEE – Growing Learning Enjoying Excellence

At Reddal Hill, we are always working hard to provide an excellent education for you. We have high expectations and want you to be creative and innovative whilst learning through our exciting and challenging curriculum. As well as this, we always have key areas we are focusing on. This year, they are:



To improve the attainment and progress in phonics and early reading, in EYFS and KS1, using the 'Little Wandle' programme of work.



To improve the attainment and progress in science and foundation subjects, with a focus on ensuring pupils know more and remember more key information.

To continue to develop the maths curriculum, with a focus on problem solving and reasoning, through the implementation of the 'Mastery Reasoning' programme of work.



To improve the attainment and progress in reading, across the school, with a focus on fluency and comprehension.

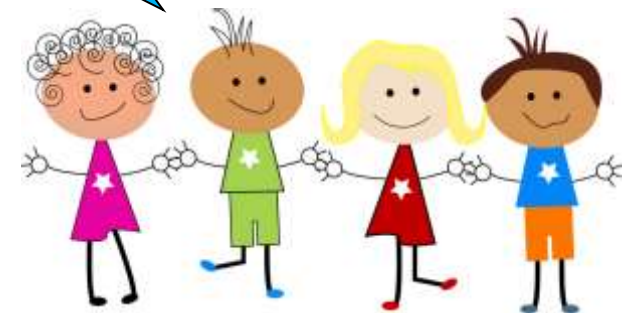
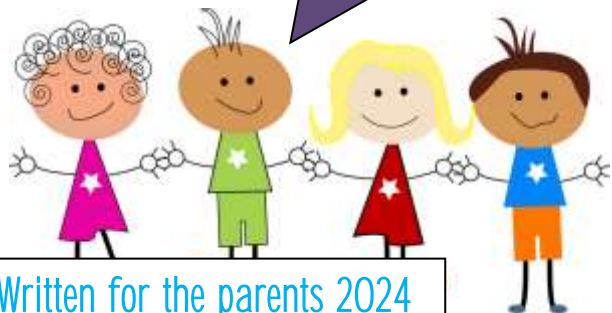


To do this, we need to work together...

As teachers, we will do our best to provide an interesting and challenging education.

You will love, encourage and support your child while they learn at home and school.

Your child will do their best, complete their homework and enjoy their learning to achieve their full potential.



Written for the parents 2024