

Living, Dead or Never Alive



Wednesday 13th January 2021

WALT: compare things that are living, dead and have never been alive.

WILF

- I can explain how life processes can tell us if something is living, dead or has never been alive.
- I can say if something is living, dead or has never been alive.
- I can give reasons for my answers.



I'm Alive!

We are all alive!

What do we do that lets us know we are alive?





Living or Not?

Which of these are living?

Which are non-living?

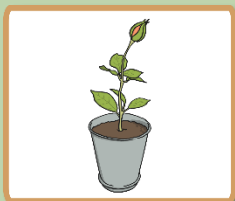
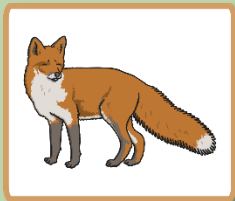
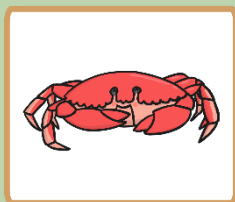
How can you tell?



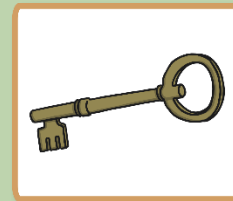
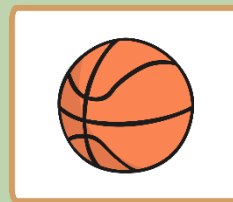
Living or Not?



Living

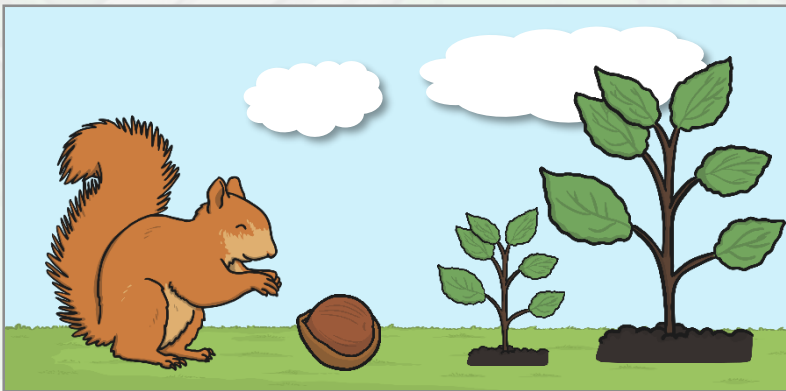


Non-living

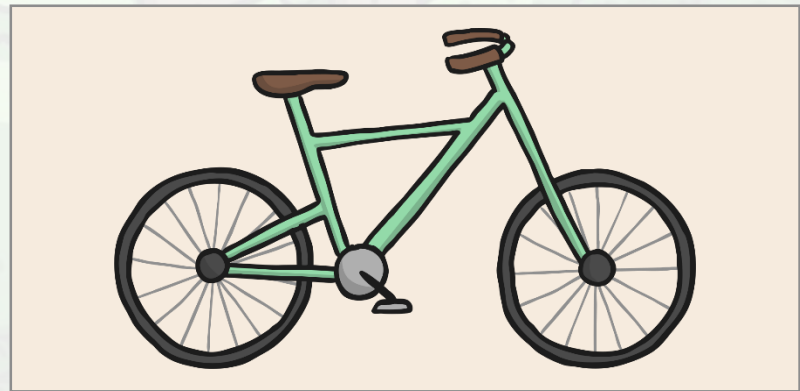


Living or Not?

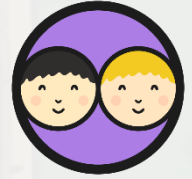
- Living things have life processes.
- They need food, water and air to stay alive.
- They can sense changes in the environment.
- They can move, grow and reproduce.



- Non-living things can be things that were once living or part of a living thing, or they can be things that have never been alive.
- They do not need food, water or air.
- They cannot reproduce.

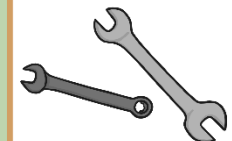
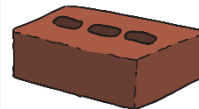
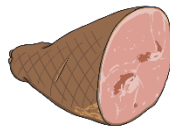
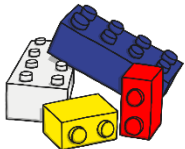
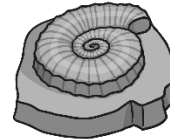


Dead or Never Alive?



Many non-living things have never been alive but some of them were once part of a living plant or an animal.

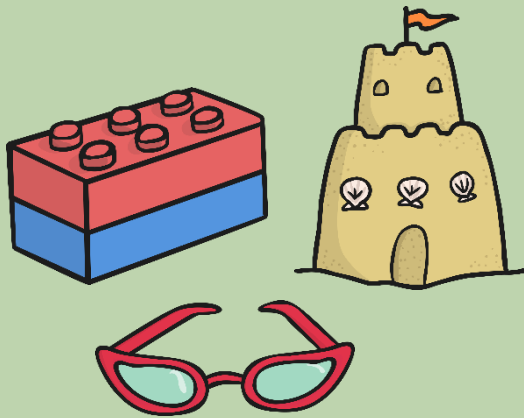
Which of these non living things are dead, and which were never alive?
It may help to think of what the thing is made from.



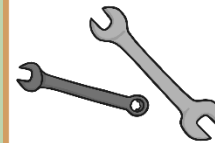
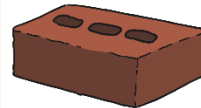
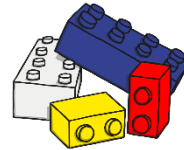
Dead or Never Alive?



Things made of materials like metal, rock, plastic, glass and sand have never been part of a living thing.



Never alive



Dead or Never Alive?

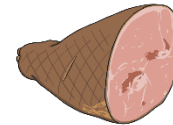
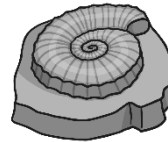


All of these things are non-living, but they used to be part of a living thing.

Which living thing were they part of?



Dead

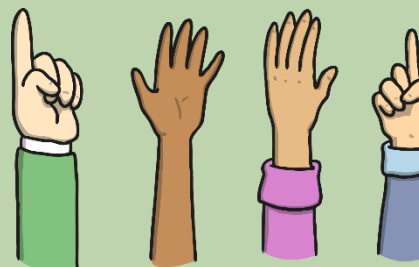


How Can You Tell?



Is this teapot
living, dead or
has it never
been alive?

How can
you tell?

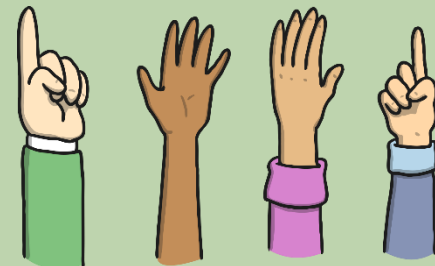
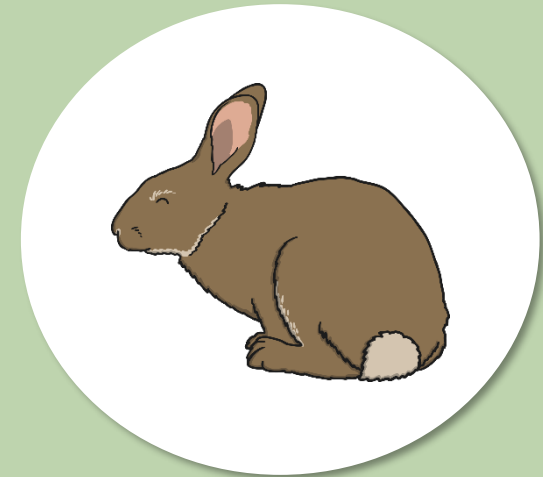


How Can You Tell?



Is this rabbit
living, dead or
has it never
been alive?

How can
you tell?

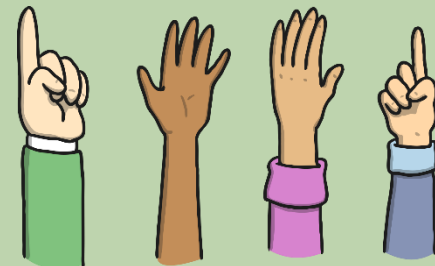


How Can You Tell?



Is this pinecone
living, dead or
has it never
been alive?

How can
you tell?



Remember Mrs Gren!

Whole Class

Characteristics of living things

Movement

Respiration

Sensitivity

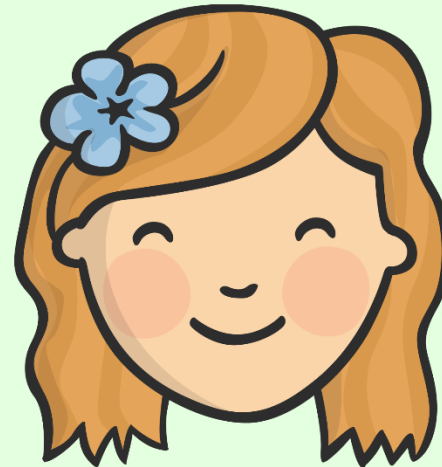
Growth

Reproduction

Excretion

Nutrition

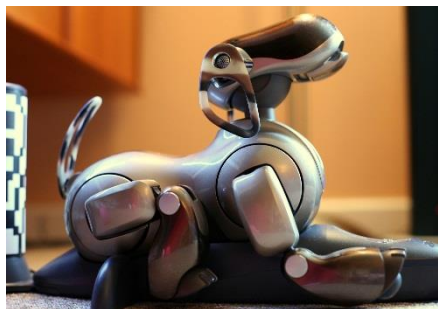
MRS GREN



Which One Am I?



Living, Dead or Never Alive



ATtribution - Photo courtesy of Alden Chadwick, Sergey Galyonkin and Szilvka Robert (@flickr.com) - granted under creative commons licence - attribution

Which One Am I?



Living, Dead or Never Alive

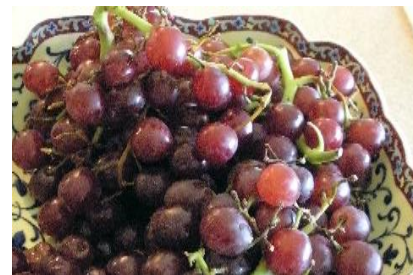


ATtribution - Photo courtesy of Jan, Mike Fleming and Carolyn Tiry (@flickr.com) - granted under creative commons licence - attribution

Which One Am I?



Living, Dead or Never Alive



ATtribution - Photo courtesy of Steven Depolo, tripb and kirybabe (@flickr.com) - granted under creative commons licence - attribution

